



**General Characteristics of SB Series Explosion Proof Industrial Belt Driven Suspension Blowers**

The SB Series is a permanently lubricated, belt driven portable explosion proof blower.  
 Can be used in industrial or commercial areas.  
 For indoor use.  
 Used for cooling and high-volume air movement.  
 The Blades are made of aluminum and come in the three sizes, 36"Ø, 42"Ø & 48"Ø.  
 For safety, the SB Series are designed with powder coated front and rear guards.  
 The housing is made from a corrosion and dent proof high density polyethylene.  
 Mounting chain not included.  
 The motor is designed with a ball bearing system & permanent split capacitor.  
 The SB HL series is explosion proof, it's ratings are: Class I, Group D, & Class II, Groups E, F & G (metal housing and no switch.)  
 The three products are not ETL-CETL listed.  
 Note: All products listed are in this section are custom built and subject to 100% cancellation/restocking charges. The photograph is a representation of stocked models, actual models may vary in appearance.  
 The SB Series meets OSHA guard requirements.  
 Made in the U.S.A.



**Product Applications of SB Series Explosion Proof Industrial Belt Driven Suspension Blowers**

For industrial and commercial use.  
 Used for cooling factories, shops, bakeries, loading docks, laundries, gymnasiums, warehouses, aircraft hangars, and virtually any place a high volume of air movement is required.  
 For indoor and explosion proof use.

**Warranty of SB Series Explosion Proof Industrial Belt Driven Suspension Blowers**

Manufacturer's Warranty: 1 year.

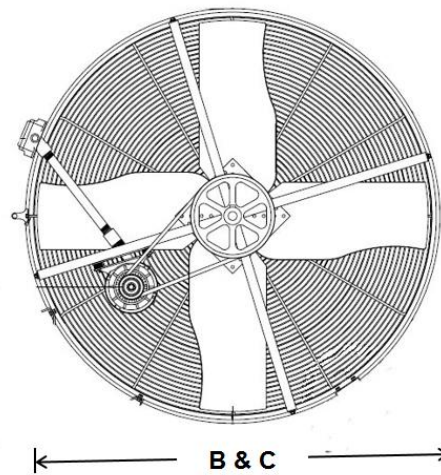
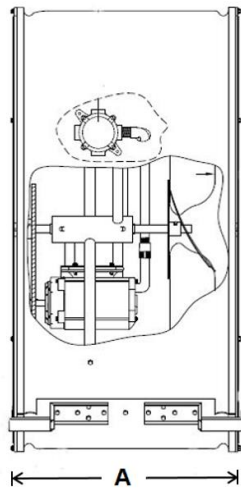
**Specific Characteristics of SB Series Explosion Proof Industrial Belt Driven Suspension Blowers**

Item #	Manufacturing #	Size Ø(In.)	CFM	Volts V	Amperes A	Phases PH	HP	RPM	Motor Type	Weight and Dimensions with Packaging	
										Lbs.	L,W,H In.
USSHL-001	SB 36-B-HL	36	6900	115/230	7.8/3.9	1	1/2	500	Explosion Proof	137	27,42,42
USSHL-002	SB 42-B-HL	42	10600	115/230	10.8/5.4	1	3/4	430	Explosion Proof	152	27,48,48
USSHL-003	SB 48-B-HL	48	14400	115/230	13.2/6.6	1	1	390	Explosion Proof	175	27,54,54



**Dimensions (In.) of SB Series Explosion Proof Industrial Belt Driven Suspension Blowers**

Series	Length A	Width B	Height C
USSHL-001	17 5/8"	36.3"	36.3"
USSHL-002	20 5/8"	42.3"	42.3"
USSHL-003	20 5/8"	48.5"	48.5"





## SB Series Explosion Proof Industrial Belt Driven Suspension Blowers

### Ratings Definitions

**Class I:** Equipment does not have surface operating temperature in excess of the ignition temperature of the specific gas or vapor.

Application Examples:

- Offshore and land based drilling rigs, petroleum exploration and testing facilities.
- Petroleum refineries, gasoline storage and dispensing areas.
- Industrial firms that use flammable liquids in dip tanks for parts cleaning or other operations.
- Petrochemical companies that manufacture chemicals from gas or oil.
- Dry cleaning facilities where vapors from cleaning fluids may be present.
- Aircraft hangers and fuel servicing areas.
- Utility gas plants and operations involving storage and handling of liquefied petroleum or natural gas.

**Group C:** Atmospheres such as but not limited to acetaldehyde, allyl alcohol, hydrogen sulfide, ethylene, carbon monoxide, or other gases or vapors of equivalent hazard.

**Group D:** Atmospheres such as but not limited to acetone, alcohol, gasoline, lacquer solvent vapors, natural gas, propane or other gases or vapors of equivalent hazard.

**Class II:** Equipment does not have surface temperature greater than the ignition temperature of the specified dust.

Application Examples:

- Coal preparation plants and other carbon handling or processing areas.
- Grain elevators, flour and feed mills.
- Plants which manufacture, use or store Magnesium or Aluminum powders.
- Plants that have chemical or metallurgical processes.
- Producers of starch products or candy.
- Spice grinding plants, sugar plants and cocoa plants.

**Group E:** Atmosphere containing combustible metal dust regardless of resistivity, or other combustible dust of similar hazard characteristics having resistivity of less than  $10^5$  OHM- centimeter.

**Group F:** Atmosphere containing carbon black, charcoal, coal or coke dust.

**Group G:** Atmospheres containing combustible dust having resistivity of  $10^5$  OHM- centimeter or greater.

**Division I:** A location in which ignitable concentrations of flammable material exist under normal operating conditions.

**Division II:** Locations in which flammable materials will normally be confined within closed containers and escape only in the case of accidental rupture, breakdown or during maintenance operations. Any equipment approved for Division I is automatically also approved for Division II.



Short Description of SB Series Explosion Proof Industrial Belt Driven Suspension Blowers		
Item #	Manufacturing #	Short Description 70 Characters Maximum
		0123456789012345678901234567890123456789012345678901234567890123456789
USSHL-001	SB 36-B-HL	36"Ø, 6900CFM, 115/230V, 7.8/3.9A, 1Ph, 1/2HP Explosion Proof Motor, 500RPM.
USSHL-002	SB 42-B-HL	42"Ø, 10600CFM, 115/230V, 10.8/5.4A, 1Ph, 3/4HP Explosion Proof Motor, 430RPM.
USSHL-003	SB 48-B-HL	48"Ø, 14400CFM, 115/230V, 13.2/6.6A, 1Ph, 1HP Explosion Proof Motor, 390RPM.

SEO Table of SB Series Explosion Proof Industrial Belt Driven Suspension Blowers	
Title	
TPI SB Series Industrial Belt Driven Suspension Blowers.	
Meta Description	
TPI SB Series Industrial Belt Driven Suspension Blowers for Industrial Use, TPI SB Series Industrial Belt Driven Suspension Blowers for Commercial use, TPI SB Series Industrial Belt Driven Suspension Blowers for Indoor Use, TPI SB Series Industrial Belt Driven Suspension Blowers for Cooling Use, TPI SB Series Industrial Belt Driven Suspension Blowers for High Air Volume Movement Use.	
Meta Key Words	
TPI SB Series Industrial Belt Driven Suspension Blowers for Industrial Use, TPI SB Series Industrial Belt Driven Suspension Blowers for Commercial use, TPI SB Series Industrial Belt Driven Suspension Blowers for Indoor Use, TPI SB Series Industrial Belt Driven Suspension Blowers for Cooling Use, TPI SB Series Industrial Belt Driven Suspension Blowers for High Air Volume Movement Use.	
Meta URL (file name)	
tpi-sb-series-industrial-belt-driven-explosion-proof-suspension-blowers-us-english.htm	

Product Line Description of SB Series Explosion Proof Industrial Belt Driven Suspension Blowers
<pre> &lt;FONT Size=1&gt; &lt;b&gt;Type:&lt;/b&gt; TPI SB Series Industrial Belt Driven Suspension Blowers&lt;br&gt; &lt;b&gt;Drive Type:&lt;/b&gt; Belt Drive&lt;br&gt; &lt;b&gt;Motor Type(s):&lt;/b&gt; Explosion Proof&lt;br&gt; &lt;b&gt;Manufacturer:&lt;/b&gt; TPI&lt;br&gt; &lt;b&gt;Model Series:&lt;/b&gt; SB&lt;br&gt; &lt;b&gt;Voltage:&lt;/b&gt; 115/230V&lt;br&gt; &lt;b&gt;Horse Power:&lt;/b&gt; 1/2, 3/4 &amp; 1HP&lt;br&gt; &lt;b&gt;Diameters:&lt;/b&gt; 36", 42" &amp; 48"&lt;br&gt; &lt;b&gt;Air Flow:&lt;/b&gt; 6900, 10600 &amp; 14400CFM&lt;br&gt; &lt;b&gt;Ship By:&lt;/b&gt; Free LTL Freight&lt;br&gt; &lt;/FONT&gt;                     </pre>